



# INDOFINE Chemical Company, Inc.

121 Stryker Lane, Bldg. 30, Suite 1 • Hillsborough, NJ 08844 • U.S.A.

Phone: (908) 359-6778 • FAX: (908) 359-1179

website: [www.indofinechemical.com](http://www.indofinechemical.com)

e-mail: [chemical@indofinechemical.com](mailto:chemical@indofinechemical.com)

## CERTIFICATE OF ANALYSIS

Cat No.: D-264

Product: 6,2'-DIMETHOXYFLAVONE

Lot Number: 97013

Chemical Formula: C<sub>17</sub>H<sub>14</sub>O<sub>4</sub>

Molecular Weight: 282.30

Melting Point: 146-148°C

Appearance: White Powder

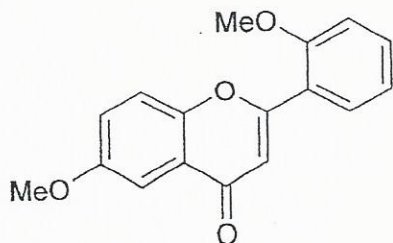
Solubility: Soluble in Chloroform

TLC: Hexane : Ethyl acetate (7:3)

NMR Spectrum: Enclosed

Storage: Store in cool, dry place

Purity(HPLC): 99.82%





# INDOFINE Chemical Company, Inc.

121 Stryker Lane, Bldg. 30, Suite 1 • Hillsborough, NJ 08844 • U.S.A.

Phone: (908) 359-6778 • FAX: (908) 359-1179

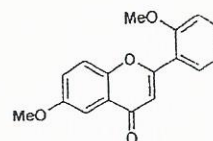
website: [www.indofinechemical.com](http://www.indofinechemical.com)

e-mail: [chemical@indofinechemical.com](mailto:chemical@indofinechemical.com)

## HPLC ANALYSIS

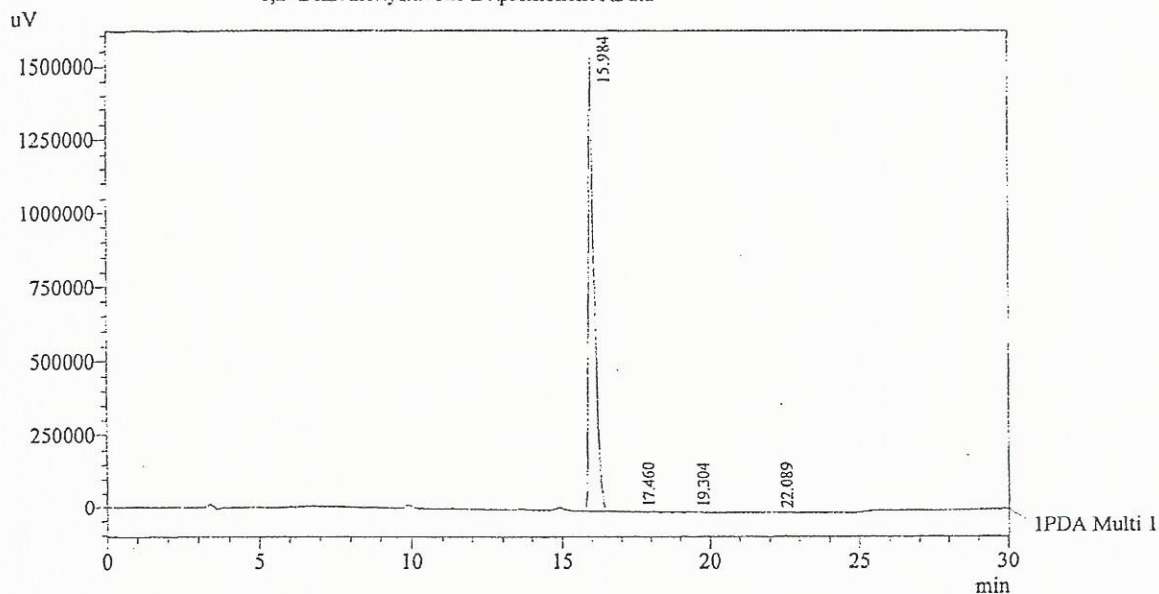
Acquired by : Sanjeev  
 Sample Name : 6,2'-Dimethoxyflavone  
 Sample ID : Lot No-97013  
 Injection Volume : 20 uL  
 Data Filename : 010213D.lcd  
 Method Filename : Linear Gradient.M.lcm

Catalog No.: D-264  
 Product name: 6,2'-Dimethoxyflavone  
 Lot No.: 97013



Column : LUNA C-18(2), (250mm x4.6mm 5.0μ)  
 Flow : 1.000 mL/min.  
 Mobile Phase : A(0.05% TFA in water) B(Acetonitrile)  
 0.01 90 10  
 12.0 10 90  
 20.0 10 90  
 23.0 90 10  
 30.0 90 10

Chromatogram  
 6,2'-Dimethoxyflavone D:\promonence\Data



1 PDA Multi 1 / 230nm 4nm

PeakTable

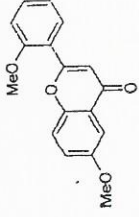
PDA Ch1 230nm 4nm

| Peak# | Name                  | Ret. Time | Area     | Area % | Relative Retention Time |
|-------|-----------------------|-----------|----------|--------|-------------------------|
| 1     | 6,2'-Dimethoxyflavone | 15.984    | 20901326 | 99.82  | 1.00                    |
| 2     | RT:17.460             | 17.460    | 10578    | 0.05   | 1.09                    |
| 3     | RT:19.304             | 19.304    | 16213    | 0.08   | 1.21                    |
| 4     | RT:22.089             | 22.089    | 11558    | 0.06   | 1.38                    |
| Total |                       |           | 20939676 | 100.00 |                         |



INDOFINE Chemical Company, Inc.  
 121 STRYKER LANE  
 BLDG. 30, SUITE 1  
 HILLSBOROUGH, NJ 08844

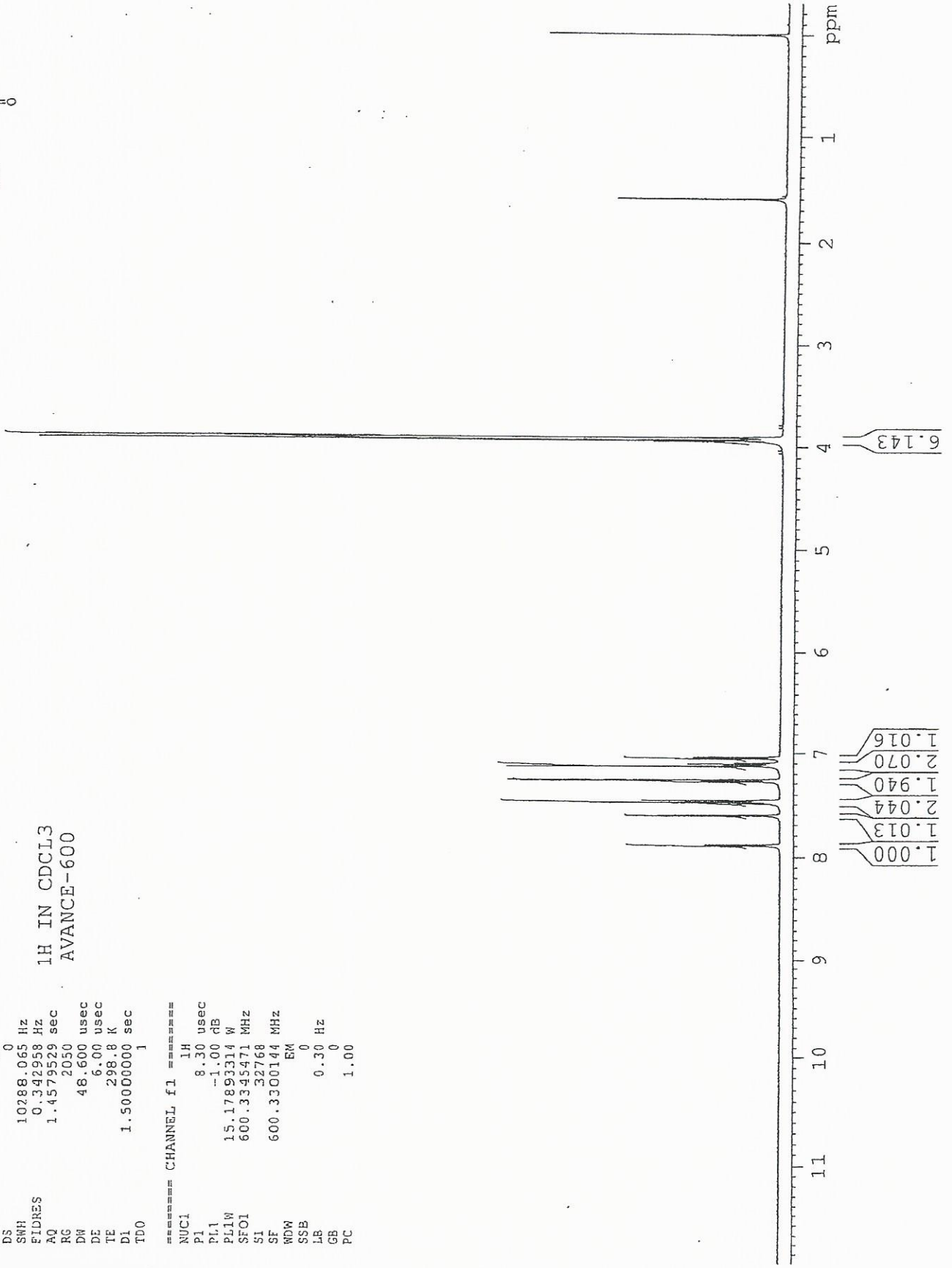
Catalog No.: D-264  
 Product name: 6,2'-Dimethoxyflavone  
 Lot No.: 97013



SOLVENT CDC13  
 NS 16  
 DS 0  
 SWH 10288.065 Hz  
 FIDRES 0.342958 Hz  
 AQ 1.4579529 sec  
 RG 2050  
 DW 48.600 usec  
 DE 6.00 usec  
 TE 298.8 K  
 D1 1.50000000 sec  
 TD0 1

1H IN CDCL3  
 AVANCE-600

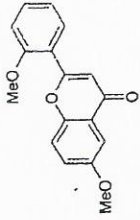
===== CHANNEL f1 =====  
 NUC1 1H  
 P1 8.30 usec  
 PL1 -1.00 dB  
 PL1W 15.17893314 W  
 SFO1 600.3345471 MHz  
 S1 32768  
 SF 600.3300144 MHz  
 NDW EM  
 SSB 0  
 LB 0.30 Hz  
 GB 0  
 PC 1.00





INDOFINE Chemical Company, Inc.  
121 STRYKER LANE  
BLDG. 30, SUITE 1  
HILLSBOROUGH, NJ 08844

Catalog No.: D-264  
Product name: 6,2'-Dimethoxyflavone  
Lot No.: 97013



SOLVENT CDC13  
NS 16  
DS 0  
SWH 10288.065 Hz  
FIDRES 0.342958 Hz  
AQ 1.4579529 sec  
RG 2050  
DW 48.600 usec  
DE 6.00 usec  
TE 298.8 K  
D1 1.50000000 sec  
TD0 1

1H IN CDCl3  
AVANCE-600

\*\*\*\*\* CHANNEL f1 \*\*\*\*\*  
NUC1 1H  
P1 8.30 usec  
PL1 -1.00 dB  
PL1W 15.17893314 W  
SF01 600.3345471 MHz  
SI 32.768  
SF 600.3300144 MHz  
WDW EM  
SSB 0  
LB 0.30 Hz  
GB 0  
PC 1.00

